

Carbon Black.

CB PROTECTION

Application Control and Critical Infrastructure Protection

Highly targeted assets demand perfect security, but can't afford loss in performance. Critical systems are increasingly targeted because they contain the most valuable information. These systems cannot afford a moment of unscheduled downtime or performance degradation as they are the lifeblood of the organization. They often run on out-of-date or unsupported operating systems, which are costly to secure and support. The most common approach to defending these systems typically relies on layering multiple, ineffective security products, which is costly, creates risk and jeopardizes performance.

CB Protection is an industry-leading application control product, used to lock down servers and critical systems, prevent unwanted changes and ensure continuous compliance with regulatory mandates. Leveraging cloud reputation services, IT-based trust policies and multiple sources of threat intelligence from the CB Predictive Security Cloud, CB Protection ensures that only trusted and approved software is allowed to execute on an organization's critical systems and endpoints.

CB Protection combines application whitelisting, file integrity monitoring, full-featured device control and memory/tamper protection into a single agent. CB Protection watches for behavioral indicators of malicious activity and conducts continuous recording of attack details to provide rich visibility into everything suspicious that attackers attempt to do. With the addition of the File Delete feature, CB Protection is now a direct control for requirement 5 of PCI DSS, enabling customers to remove traditional antivirus without the need for undergoing the compensating control process.

Security teams can harden their new and legacy systems against all unwanted change, simplify the compliance process, and provide the best possible protection for corporate systems at enterprise scale. CB Protection is available through MSSPs or directly through on-premise.

"It was a standout product for us. The effort required to install and maintain it appeared to be much lower than other products in its class."

— SIMON TURNER, HEAD OF IS ARCHITECTURE, KORDIA



At-a-glance visibility into malicious files, potential risks, and more with configurable dashboards

USE CASES

Lock down critical systems

- **Fixed function devices** Point-of-sale terminals, ATMs, industrial control systems, medical devices
- **High-risk endpoints** Corporate desktops, executive laptops
- **Servers** Domain controllers, email and web application servers, card data environments, financial trading platforms
- **Legacy systems** Running unsupported operating systems

BENEFITS

- Stop malware, ransomware and next-gen attacks
- Eliminate unplanned downtime of critical systems
- Consolidate endpoint agents
- Prevent unwanted change to system configuration
- Meet IT risk and audit controls across major regulatory mandates
- Increase efficiency of IT resources with streamlined IT audit processes
- Protect legacy systems running on unsupported operating systems
- CB Protection is now a direct control for requirement 5 of PCI DSS

CB PREDICTIVE SECURITY CLOUD (PSC)

The PSC is an endpoint protection platform that leverages unfiltered data and streaming analytics to prevent, investigate, remediate and hunt for threats.

Learn more at carbonblack.com/psc

Carbon Black.

Key Capabilities

CB Protection is a powerful positive security solution for data centers and critical systems that allows server admins to control change while consolidating agents. Using a 'Default Deny' approach, CB Protection reduces your attack surface and downtime by automating approval of trusted software and eliminating the burden of whitelist management.

Lock Down Critical Systems

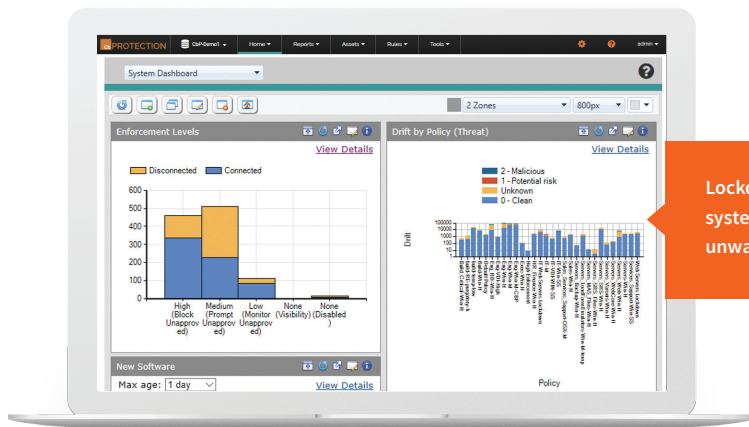
Stop malware and non-malware attacks by preventing unwanted changes to your applications and files, providing you with the control over your environment that you need.

Ensure Continuous Compliance

Accelerate compliance by meeting many of the requirements in regulatory standards and frameworks, such as PCI-DSS, HIPAA/HITECH, SOX, NERC CIP, GDPR and NIST 800-53.

High Performance and Low Touch Application Control

Be confident that your solution is blocking the "bad" and allowing the "good" without interrupting daily operations.



FEATURES

- Application control
- File integrity monitoring and control
- Device control
- Memory protection
- Reputation services
- Open APIs

PLATFORMS

Sensor Support:

- Windows XP, Server, Vista, Embedded, POS
- Mac OS X
- RHEL Linux
- CentOS Linux
- Oracle RHCK Linux



REQUEST A DEMO

Contact us today to schedule a demonstration.

CONTACT@CARBONBLACK.COM

617.393.7400

ABOUT CARBON BLACK

Carbon Black (NASDAQ: CBLK) is a leading provider of next-generation endpoint security delivered via the cloud. Leveraging its big data and analytics cloud platform – the CB Predictive Security Cloud – Carbon Black consolidates prevention, detection, response, threat hunting and managed services into a single platform with a single agent and single console, making it easier for organizations to consolidate security stacks and achieve better protection. As a cybersecurity innovator, Carbon Black has pioneered multiple endpoint security categories, including application control, endpoint detection and response (EDR), and next-generation antivirus (NGAV) enabling customers to defend against the most advanced threats. More than 4,300 global customers, including 35 of the Fortune 100, trust Carbon Black to keep their organizations safe.

Carbon Black and CB Predictive Security Cloud are registered trademarks or trademarks of Carbon Black, Inc. in the United States and other jurisdictions.

Carbon Black.

1100 Winter Street

Waltham, MA 02451 USA

P 617.393.7400 F 617.393.7499

www.CarbonBlack.com